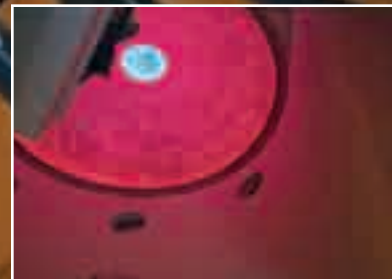
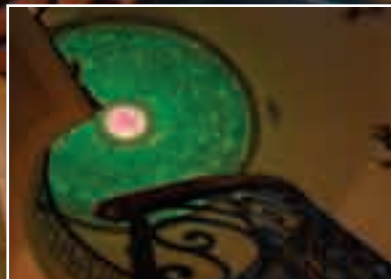
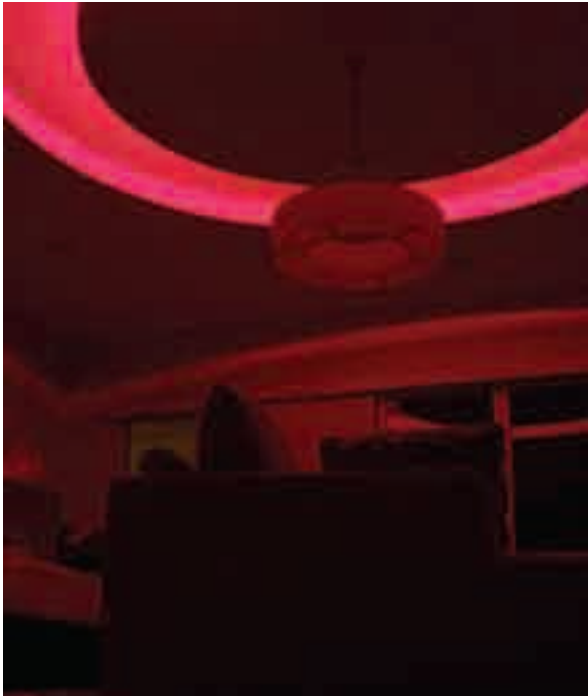


# PRODUCTS: AMBIENT GLOW™ LED LIGHT STRIPS

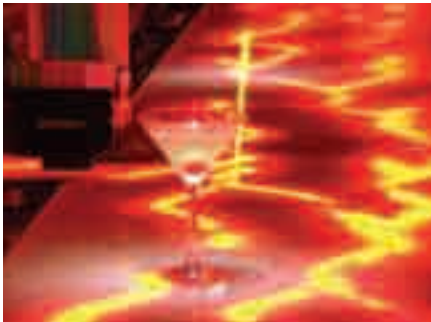


# AMBIENT GLOW™ LED LIGHT STRIPS



Impact Lighting's LED Flexible strips are the latest in solid state lighting technology.

**Applications:** Cove lighting, Channel Letters, Sign Illumination, Indirect Accent Decor Lighting, Large area Back Lighting in cabinets and furniture, Base Board Lighting, Soft Lights, Wall Sconces, Vehicles, Wine Racks, Restaurant Lighting and Home Theater Lighting.



## **BENEFITS OF IMPACT LIGHTING'S AMBIENT GLOW™ LED STRIPS:**

**Environmentally Friendly:** LED strips consume far less energy than standard lighting products, leading to greatly reduced energy costs

### **ECONOMY:**

LED Light Strips can offer significant cost savings over time, not only in reducing energy consumption in maintenance as well.

### **ENERGY EFFICIENT:**

Ambient Glow Strips uses 90% less energy than standard incandescent lighting.

Furthermore our strips produce virtually no heat which results in lower cooling costs of your home and or business.

**LONG LIFE:** Even in hostile conditions the typical working life of our strips can be several tens of thousands of hours as compared to most domestic bulb filaments which expire after a couple thousands hours. Even fluorescent lights can compare to the working life of our strips.

### **STRENGTH AND RELIABILITY:**

Our strips are incased in virtually unbreakable high strength optical grade resin. There is no glass or filament to break as compared to a normal incandescent bulb which is very fragile is easily broken by a sudden shock. Our LED strips are perfect for rugged or demanding environments or installation where access is difficult.

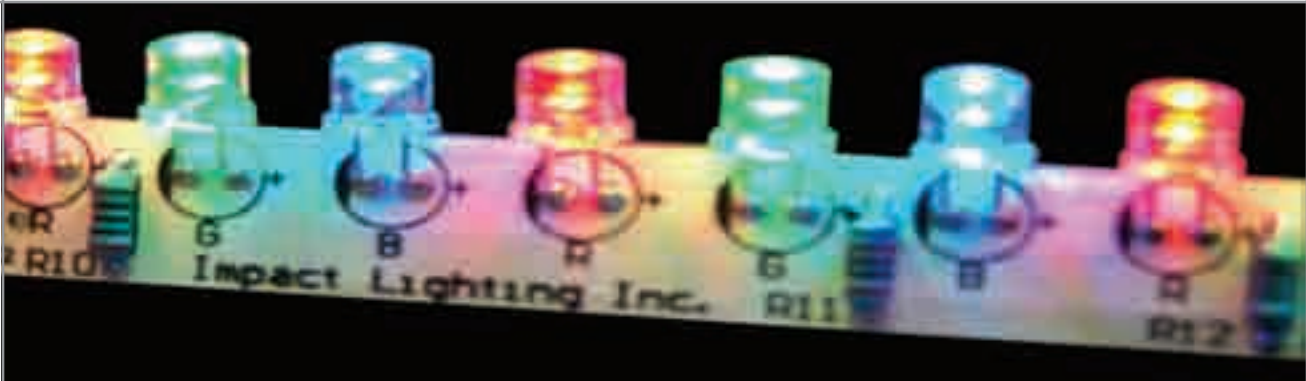
### **IMPROVED SAFETY AND SECURITY:**

The low heat and low voltages associated with our Ambient LED Glow Strips™ make them a far safer source of light. No glass to break, no white hot filament, no flames, no noxious fumes, no humming and no unhealthy radiation.

**Design Flexibility:** The intrinsically safe nature of our strips combined with their long term liability, miniature size and flexibility means that they can be built into the fabric of almost any structure or object.

With Impact Lighting Inc's Flexible Strips anything can become a source of light and they offer designers and architects a lighting tool of unprecedented versatility.

# AMBIENT GLOW™ LED LIGHT STRIPS - RGB



## SPECIFICATIONS

PART NUMBER	IL-AG-FS-RGB
LED PER STRIP	36 LEDs (12 RED   12 BLUE   12 GREEN)
WATTAGE	2 WATTS
LUMEN	30 ON WHITE
RECOMMENDED MAX FOOTAGE PER CABLE RUN	20 STRIPS
INPUT VOLTAGE	12 VOLTS
CURRENT	166 MA ON WHITE
RECOMMENDED WIRE	18 - 24 AWG
STRIP FIXTURE LENGTH	14.3125 INCHES
STRIP FIXTURE HEIGHT W/MOUNTING CLIPS	0.65 INCHES
POWER CONNECT TERMINAL	4 PIN POWER CONNECTOR
PCB TYPE	WHITE FLEXIBLE PCB
BEAM ANGLE	+/- 60 DEGREES
LIGHTING SOURCE	0.2 FLAT LED
ENVIRONMENTAL SPECS	-65 F - 130 F 0-100% HUMIDITY (NO DIRECT RAIN)
BAND RADIUS	1.5 INCHES (38mm)



## ACCESSORIES

### POWER SUPPLIES

ITEM NO.	DESCRIPTION	INPUT VOLTAGE	OUTPUT VOLTAGE	WATTAGE
ILPS-1.25A	1.25 AMP POWER SUPPLY	100V - 240V	12V	15 WATTS
ILPS-3.5A	3.5 AMP POWER SUPPLY	100V - 240V	12V	40 WATTS
ILPS-5A	5 AMP POWER SUPPLY	100V - 240V	12V	60 WATTS
ILPS-8.5A	8.5 AMP POWER SUPPLY	100V - 240V	12V	100 WATTS
ILPS-12.5A	12.5 AMP POWER SUPPLY	100V - 240V	12V	150 WATTS
ILPS-18A	18 AMP POWER SUPPLY	100V - 240V	12V	200 WATTS
ILPS-25A	25 AMP POWER SUPPLY	100V - 240V	12V	300 WATTS
ILPS-42A	40 AMP POWER SUPPLY	100V - 240V	12V	500 WATTS

36 LEDs



# AMBIENT GLOW™ LED LIGHT STRIPS - RGB



## JUMPERS / CONNECTORS

ITEM NO.	DESCRIPTION
IL-AG-J-CC-06	6 INCH JUMPERS FOR RGB STRIPS
IL-AG-J-CC-1	1 FOOT JUMPERS FOR RGB STRIPS
IL-AG-J-CC-2.6	2'-6" FOOT JUMPERS FOR LIGHT STRIPS
IL-AG-J-CC-4	4 FOOT JUMPERS FOR RGB STRIPS
IL-AG-J-CC-C	CUSTOM SIZE JUMPERS FOR RGB STRIPS

## MOUNTING CLIPS

ITEM NO.	DESCRIPTION
IL-AG-MC-CC-1	SINGLE MOUNTED CLIPS FOR RGB STRIPS
IL-AG-MC-CC-25	25/ BAG MOUNTING CLIPS FOR RGB STRIPS
IL-AG-DT-ROLL	DOUBLE SIDE TAPE ROLL
IL-AG-ST-6	6 FOOT CLEAR SQUARE TUBE
IL-AG-RT-6	6 FOOT CLEAR ROUND TUBE
IL-AG-ST-EC-B	BLACK END CAP FOR SQUARE TUBE
IL-AG-ST-EC-C	CLEAR END CAP FOR SQUARE TUBE
IL-AG-RT-EC-B	BLACK END CAP FOR ROUND TUBE
IL-AG-RT-EC-C	CLEAR END CAP FOR ROUND TUBE



## CONTROLLERS

ITEM NO.	DESCRIPTION
IL-AG-CONTROL-BASIC	COLOR CHANGING BASIC CONTROLLER
IL-DMX-DECODE-3	COLOR CHANGING DECODER
IL-AG-CONTROL-DELUX	COLOR CHANGING DELUX CONTROLLER DMX READY
IL-AG-CONTROL-RC	COLOR CHANGING REMOTE CONTROL KIT
IL-DMX-CONTROL-SUN SUNLIGHT	DMX PROGRAMMABLE CONTROLLER*
IL-DMX-CONTROL-SUN-AD	ADVANCED SUNLIGHT DMX PROGRAMMABLE CONTROLLER*

\*FOR DMX AND MORE CONTROLLER OPTION PLEASE GO TO CONTROLLER SECTION OF CATALOG.



0.5"



LED FACING DOWN

0.5"



LED FACING UP



MOUNTING CLIPS

# AMBIENT GLOW™ LED LIGHT STRIPS - WHITE



## SPECIFICATIONS

PART NUMBER	IL-AG-FS-COOL, IL-AG-FS-WARM
LED PER STRIP	24 LEDs
WATTAGE	3.2 WATTS PER FOOT
LUMEN	30
RECOMMENDED MAX FOOTAGE PER CABLE RUN	20 STRIPS
INPUT VOLTAGE	12 VOLTS
OUTPUT CURRENT	260 MA
RECOMMENDED WIRE	18 - 24 AWG FXPC TYPE CABLE
STRIP FIXTURE LENGTH	12 INCHES
STRIP FIXTURE HEIGHT W/MOUNTING CLIPS	0.65 INCHES
POWER CONNECT TERMINAL	2 PIN POWER CONNECTOR
PCB TYPE	UL 94-VO FR-4 G10 FIBERGLASS
BEAM ANGLE	+/- 90 DEGREES
LIGHTING SOURCE:	HIGH FLAX INGAN WHITE
ENVIRONMENTAL SPECS	-65 F - 130 F 0-100% HUMIDITY (NO DIRECT RAIN)
BAND RADIUS	1.5 INCHES (38mm)



## ACCESSORIES

### POWER SUPPLIES

ITEM NO.	DESCRIPTION	INPUT VOLTAGE	OUTPUT VOLTAGE	WATTAGE
ILPS-1.25A	1.25 AMP POWER SUPPLY	100V - 240V	12V	15 WATTS
ILPS-3.5A	3.5 AMP POWER SUPPLY	100V - 240V	12V	40 WATTS
ILPS-5A	5 AMP POWER SUPPLY	100V - 240V	12V	60 WATTS
ILPS-8.5A	8.5 AMP POWER SUPPLY	100V - 240V	12V	100 WATTS
ILPS-12.5A	12.5 AMP POWER SUPPLY	100V - 240V	12V	150 WATTS
ILPS-18A	18 AMP POWER SUPPLY	100V - 240V	12V	200 WATTS
ILPS-25A	25 AMP POWER SUPPLY	100V - 240V	12V	300 WATTS
ILPS-42A	40 AMP POWER SUPPLY	100V - 240V	12V	500 WATTS

### JUMPERS / CONNECTORS

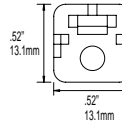
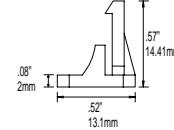
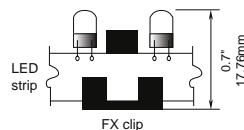
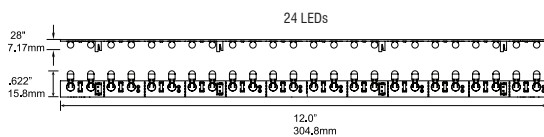
ITEM NO.	DESCRIPTION
IL-AG-J-06	6 INCH JUMPERS FOR LIGHT STRIPS
IL-AG-J-1	1 FOOT JUMPERS FOR LIGHT STRIPS
IL-AG-J-2.6	2'-6" FOOT JUMPERS FOR LIGHT STRIPS
IL-AG-J-4	4 FOOT JUMPERS FOR LIGHT STRIPS

### MOUNTING CLIPS

ITEM NO.	DESCRIPTION
IL-AG-MC-CC-1	SINGLE MOUNTED CLIPS FOR RGB STRIPS
IL-AG-MC-CC-25	25/ BAG MOUNTING CLIPS FOR RGB STRIPS
IL-AG-DT-ROLL	DOUBLE SIDE TAPE ROLL
IL-AG-ST-6	6 FOOT CLEAR SQUARE TUBE
IL-AG-RT-6	6 FOOT CLEAR ROUND TUBE
IL-AG-ST-EC-B	BLACK END CAP FOR SQUARE TUBE
IL-AG-ST-EC-C	CLEAR END CAP FOR SQUARE TUBE
IL-AG-RT-EC-B	BLACK END CAP FOR ROUND TUBE
IL-AG-RT-EC-C	CLEAR END CAP FOR ROUND TUBE

### DIMMING

ITEM NO.	DESCRIPTION
IL-AG-DIMMING-1	WALL MOUNT LED DIMMER





# AMBIENT GLOW™ LED LIGHT BARS



## SPECIFICATIONS

LED PER STRIP  
WATTAGE  
LUMEN  
RECOMMENDED MAX FOOTAGE PER CABLE RUN  
INPUT VOLTAGE  
CURRENT  
RECOMMENDED WIRE  
STRIP FIXTURE LENGTH  
STRIP FIXTURE HEIGHT W/MOUNTING CLIPS  
POWER CONNECT TERMINAL

24 OR 36 LEDS (12 RED | 12 BLUE | 12 GREEN)  
2 WATTS  
30 ON WHITE  
20 STRIPS  
12 VOLTS  
166 MA ON WHITE  
18 - 24 AWG  
14.3125" (RGB) 12" (SINGLE)  
0.65 INCHES  
4 PIN POWER CONNECTOR (RGB)  
2 PIN POWER CONNECTOR (SINGLE)  
WHITE FLEXIBLE PCB  
+/- 60 DEGREES  
5 MM FLAT LED  
-65 F - 130 F 0-100% HUMIDITY (NO DIRECT RAIN)  
1.5 INCHES (38mm)

### SQUARE LIGHT BAR



### ROUNDED LIGHT BAR



WEATHER RESISTANT - MAY BE  
INSTALLED UNDERWATER

PCB TYPE  
BEAM ANGLE  
LIGHTING SOURCE  
ENVIRONMENTAL SPECS  
BAND RADIUS

## ACCESSORIES

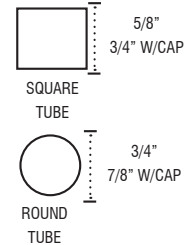
### POWER SUPPLIES

ITEM NO.	DESCRIPTION	INPUT VOLTAGE	OUTPUT VOLTAGE	WATTAGE
ILPS-1.25A	1.25 AMP POWER SUPPLY	100V - 240V	12V	15 WATTS
ILPS-3.5A	3.5 AMP POWER SUPPLY	100V - 240V	12V	40 WATTS
ILPS-5A	5 AMP POWER SUPPLY	100V - 240V	12V	60 WATTS
ILPS-8.5A	8.5 AMP POWER SUPPLY	100V - 240V	12V	100 WATTS
ILPS-12.5A	12.5 AMP POWER SUPPLY	100V - 240V	12V	150 WATTS
ILPS-18A	18 AMP POWER SUPPLY	100V - 240V	12V	200 WATTS
ILPS-25A	25 AMP POWER SUPPLY	100V - 240V	12V	300 WATTS
ILPS-42A	40 AMP POWER SUPPLY	100V - 240V	12V	500 WATTS

## CONTROLLERS

ITEM NO.	DESCRIPTION
IL-AG-CONTROL-BASIC	COLOR CHANGING BASIC CONTROLLER
IL-DMX-DECODE	COLOR CHANGING DECODER
IL-AG-CONTROL-DELUX	COLOR CHANGING DELUX CONTROLLER DMX READY
IL-AG-CONTROL-RC	COLOR CHANGING REMOTE CONTROL KIT
IL-DMX-CONTROL-SUN SUNLIGHT	DMX PROGRAMMABLE CONTROLLER*
IL-DMX-CONTROL-SUN-AD	ADVANCED SUNLIGHT DMX PROGRAMMABLE CONTROLLER*

\*FOR DMX AND MORE CONTROLLER OPTION PLEASE GO TO CONTROLLER SECTION OF CATALOG.



## CAPS

SQUARE CAPS: BLACK - IL-LTS-CAP-B CLEAR - IL-LTS-CAP-C | ROUND CAPS: BLACK - IL-LTR-CAP-B CLEAR - IL-LTR-CAP-C

